


BFUEngineering

CATALOG



Index

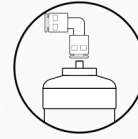
Domestic / Filters	01
Domestic / Membranes	05
Domestic / Spares	06
Domestic / Filter Housings	07
Clack / Industrial	08
BNT Valve / Industrial	15
Runxin / Industrial	16
Tank / Industrial	22
Tank Accessories / Industrial	25
Filtration Media / Industrial	29
Pentair Aquaflex UF / Industrial	30
UV / Industrial	31
Vontron / Industrial	32
Toray / Industrial	34
CSM / Industrial	35
Membrane Housing / Industrial	37
Pentair / Industrial	38
RO Pumps and Motors / Industrial	40



BFUEngineering

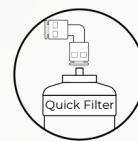
DOMESTIC

FILTERS - MEMBRANES - FILTER HOUSINGS - SPARES



Green Aqua Filters

Product Code	Model
DO-FLT-PP-GA	GreenAqua Sediment Filter
DO-FLT-25-GACC-GA	GreenAqua GAC COCO
DO-FLT-25-CTOC-GA	CTO Carbon (Coconut) Filter
DO-FLT-20-POSTC-GA	GreenAqua CTO COCO Block Carbon



Quick Stick Filters

Product Code	Model
DO-FLT-25-PP-C	Sediment Filter
DO-FLT-25-GACC-C	GAC Carbon (Coconut) Filter
DO-FLT-25-CTOC-C	CTO Carbon (Coconut) Filter
DO-FLT-20-POSTC-C	Post Carbon Filter
DO-FLT-25-ALKER-C	Alker Extra Plus Filtre



HF Filters

Product Code	Model
DO-FLT-25-PP-HF	Sediment Filter HF
DO-FLT-25-GACC-HF	GAC Carbon (Coconut) Filter HF
DO-FLT-25-CTOC-HF	CTO Carbon (Coconut) Filter HF
DO-FLT-20-POSTC-HF	Post Carbon Filter HF



JACO Filters

Product Code	Model
DO-FLT-25-PP-J	Sediment Filter JACO
DO-FLT-25-GACC-J	GAC Carbon (Coconut) Filter JACO
DO-FLT-25-CTOC-J	CTO Carbon (Coconut) Filter JACO
DO-FLT-20-POSTC-J	Post Carbon Filter JACO



Other Cartridge Filters

Product Code	Model
DO-FLT-20-POSTCSIL-B	2" Post Carbon Silver Filter
DO-FLT-20-MIN-C	2" Mineral Filter



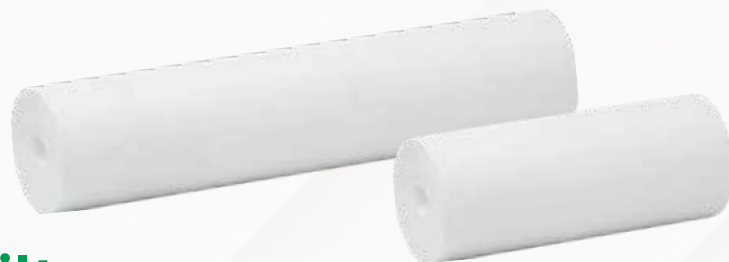
Washable Filters

Product Code	Model
DO-FLTH-05-WASH	5" Washable Filter
DO-FLTH-10-WASH	10" Washable Filter
DO-FLTH-20-WASH	20" Washable Filter
DO-FLTH-30-WASH	30" Washable Filter
DO-FLTH-40-WASH	40" Washable Filter

Spun Filters



Product Code	Model
DO-FLTH-05-PP	5" Spun
DO-FLTH-10-PP	10" Spun
DO-FLTH-20-PP	20" Spun
DO-FLTH-30-PP	30" Spun
DO-FLTH-40-PP	40" Spun



BB Spun Filters

Product Code	Model
DO-FLTH-10-PP-BB	10" 5mic BB Spun
DO-FLTH-20-PP-BB	20" 5mic BB Spun



String Filters

Product Code	Model
DO-FLTH-10-IPF	10" String Wound Filter
DO-FLTH-20-IPF	20" String Wound Filter
DO-FLTH-30-IPF	30" String Wound Filter
DO-FLTH-40-IPF	40" String Wound Filter



CTO & GAC Housing Filters

Product Code	Model
DO-FLTH-10-CTO	10" CTO Block Carbon
DO-FLTH-20-CTO	20" CTO Block Carbon
DO-FLTH-10-GAC	10" GAC Carbon filter
DO-FLTH-20-GAC	20" GAC Carbon Filter

VONTRON Membranes



Product Code	Model
DO-RO-MEM-VON-V75HP	VONTRON HP 75 GPD Membrane (1812)
DO-RO-MEM-VON-V75HT3	VONTRON HT3 75 GPD Membrane (1812)

VONTRON 1812 Membranes



Product Code	Model
DO-RO-MEM-VON-V75	75 GPD Membrane (1812)

VONTRON 2012 Membranes



Product Code	Model
DO-RO-MEM-VON-V100	100 GPD Membrane (2012)

VONTRON 3012 Membranes



Product Code	Model
DO-RO-MEM-VON-V300	300 GPD Membrane (3012)
DO-RO-MEM-VON-V400	400 GPD Membrane (3012)
DO-RO-MEM-VON-V500	500 GPD Membrane (3012)
DO-RO-MEM-VON-V600	600 GPD Membrane (3012)



DO-RO-MEM-STAR-Gold	Star Gold 90 GPD Membrane TR
DO-RO-MEM-CAPS-HF04	Capsule Membrane



Tanks

Product Code	Model
DO-RS-TK-22	2,2 Galon Tank
DO-RS-TK-32	3,2 Galon Tank
DO-RS-TK-60	6 Galon Tank
DO-RS-TK-11	10,7 Galon Tank



Pump Kit (EP)



Pump Kit (GA)



Pumps

Product Code	Model
DO-RS-PUMPKIT-75EP	75 GPD Kit: The pump, adapter, ABS, YBS, and switch cables are included in the price.
DO-RS-PUMPKIT-75GA	75 GPD Kit: The pump, adapter, ABS, YBS, and switch cables are included in the price. – There is a \$1 price difference for the model with a stand.
DO-RS-PUMP-75LFQ14	75 GPD Pump Premium (LF)
DO-RS-PUMP-75EP	75 GPD Pump (EP)
DO-RS-PUMP-75GA	75 GPD Pump (GA)

Other Spares

Product Code	Model
DO-RS-FCT-LUX	Lux Faucet
DO-RS-SHOFF	Shutoff Valve 4/6 Quick
DO-RS-PRDE	4/6" Plastic Pressure Reducer



SINGLE

DUBLEX

TRIPLEX



Filter Housings

Product Code	Model
DO-FH-10-S-2Q	10" SINGLE Filter Housing 1/2"
DO-FH-10-S-3Q	10" SINGLE Filter Housing 3/4"
DO-FH-10-S-4Q	10" SINGLE Filter Housing 1"
DO-FH-10-D-2Q	10" DUPLEX Filter Housing 1/2"
DO-FH-10-D-3Q	10" DUPLEX Filter Housing 3/4"
DO-FH-10-D-4Q	10" DUPLEX Filter Housing 1"
DO-FH-10-T-2Q	10" TRIPLEX Filter Housing 1/2"
DO-FH-10-T-3Q	10" TRIPLEX Filter Housing 3/4"
DO-FH-10-T-4Q	10" TRIPLEX Filter Housing 1"
Membrane Housing	
DO-RO-MEMH-1812	18x12 Membrane Housing



BFUEngineering

INDUSTRIAL

WATER SOFTENER - INDUSTRIAL RO SYSTEMS -
UNLOCK THE POWER OF CLEAN WATER



WS1

Product Code	Model
IN-VV-F-CLK-V1TCBTZ-03	WS1 TC Filter Valve
IN-VV-S-CLK-V1TCDTH-03	WS1 TC Softener Valve
IN-VV-S-CLK-V1EIDMH-03	WS1 EI Volumetric Softener Valve
IN-VV-S-CLK-VTT1EIDMH-03	WS1 Duplex Softener Valve



WS1

WS125

Product Code	Model
IN-VV-F-CLK-V125TCBTZ-08	WS125 TC Filter Valve
IN-VV-S-CLK-V125TCDTI-08	WS125 TC Softener Valve
IN-VV-S-CLK-V125EIDMJ-08	WS125 EI Volumetric Softener Valve
IN-VV-S-CLK-VTT125EI	WS125 Dublex Softener Set



WS125

WP15

Product Code	Model
IN-VV-F-CLK-VP15EIBTZ-05	WP15 EI Filter Valve
IN-VV-S-CLK-VP15EIDTG-05	WP15 EI Softener Valve
IN-VV-S-CLK-VP15EIDMH-05	WP15 EI Volumetric Softener Valve
IN-VV-S-CLK-VTT15EIDME-05	WP15 Dublex Softener Valve (One Main Valve - Interconnection pipe not included)
IN-VV-S-CLK-VTT15EI	WP15 Dublex Softener Set (Double Main Valve)

WS2

Product Code	Model
IN-VV-F-CLK-V2EIBTZ-05	WS2 EI Filter Valve
IN-VV-S-CLK-V2EIDTD-05	WS2 EI Softener Valve
IN-VV-S-CLK-V2EIDMG-F-05	WS2 EI Volumetric Softener Valve
IN-VV-S-CLK-VTT2EI	WS2 Dublex Softener Set



WS 2

WS2QC

Product Code	Model
IN-VV-F-CLK-V2EIBTZ-18	WS2 QC EI Filter Valve
IN-VV-S-CLK-V2EIDTD-18	WS2 QC EI Softener Valve
IN-VV-S-CLK-V2EIDMG-18	WS2 QC EI Volumetric Softener Valve
IN-VV-S-CLK-VTT2QCEI	WS2QC Dublex Softener Set



WS 2 QC



Alternator and Parts

Product Code	Model
IN-VS-CLK-V3069FF-01	WS1/WS125 Duplex Alternator (Male x Male)
-	WS1/WS125 Duplex Alternator (Female x Female)
IN-VS-CLK-V3034	VP15 Duplex Alternator 1 1/2"
IN-VS-CLK-V3071BSPT	WS15 Duplex Alternator 1 1/2"
IN-VS-CLK-V3076BSPT	WS2 Duplex Alternator 2'
IN-VS-CLK-V3474	Interconnect Cable (Between Valves)
IN-VS-CLK-V3191-01	WS1 ByPass Vertical Adapter Asy
IN-VS-CLK-	-

Meters

Product Code	Model
IN-VS-CLK-V3003	WS1 Meter (Short Cable)
IN-VS-CLK-V3040BSPT-15	WS15 Meter (Cable Included)
IN-VS-CLK-V3094BSPT-15	WS2 Meter (Cable Included)



Pistons and O-Rings

Product Code	Model
IN-VS-CLK-V3011	WS1 Piston Downflow Asy
IN-VS-CLK-V3407	WS15 Piston Downflow Asy
IN-VS-CLK-V3725	WS2 Piston Downflow Asy
IN-VS-CLK-V3005	WS1 Spacer Stack Asy (Conta Takımı)
IN-VS-CLK-V3430	WS15 Spacer Stack Asy (Conta Takımı)
IN-VS-CLK-V3729	WS2 Spacer Stack Asy (Conta Takımı)
IN-VS-CLK-V3174	WS1 Regenerant Piston (Tuz Pistonu)
IN-VS-CLK-V3726	WS2 Brine Piston Asy (Tuz Pistonu)



WS1 Piston Downflow Asy



WS2 Brine Piston Asy



WS2 Spacer Stack Asy

No Hard Water Bypass

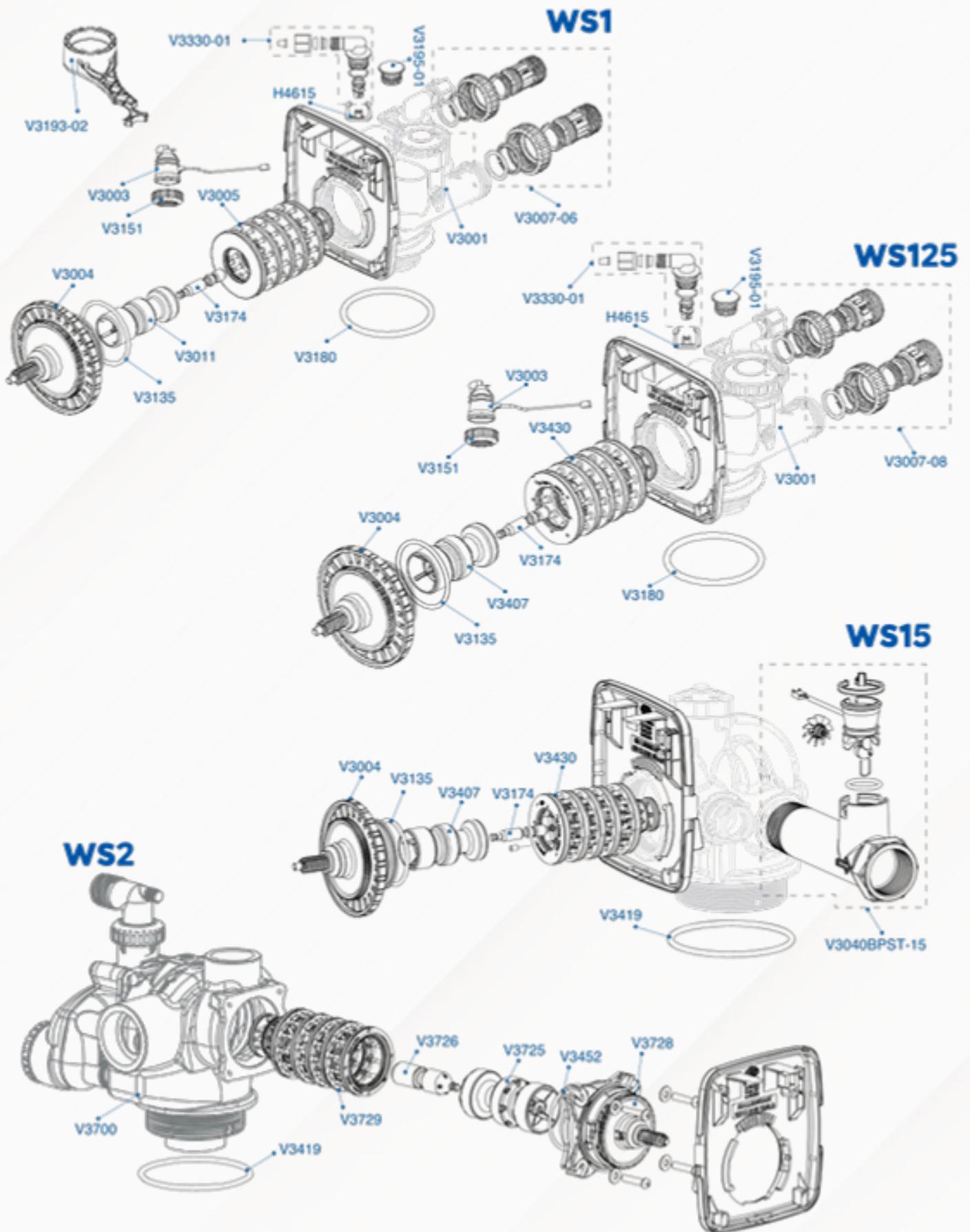
Product Code	Model
IN-VS-CLK-V3070FM	WS1 / WS125 No Hard Water Bypass
IN-VS-CLK-V3098BSPT	WS2 No Hard Water Bypass Male x Female



WS2 Spacer Stack Asy



WS2 No Hard Water Bypass



Clack Spare Parts

Product Code	Model
IN-VS-CLK-CLK27U	Top Diffuser WS1 D1203 (27"lik)
IN-VS-CLK-CLK32U	Top Diffuser WS1 (32"lik)
IN-VS-CLK-D1199-11	Top Diffuser 1 1/2" 50 mm.(Clack WS15P Uyumlu)
IN-VS-CLK-CLK27A	Bottom Diffuser WS1 (27"lik)
IN-VS-CLK-V3186EU-06	Adapter 15 V.
IN-VS-CLK-V3007-06	WS1 Plastik Yoke (1")
IN-VS-CLK-V3007-08	WS125 Plastik Yoke (1 ¼")
IN-VS-CLK-V3162	WS1 DLFC ¾" (022 - 100)
IN-VS-CLK-V3190	WS1 DLFC 1" (110 - 250)
IN-VS-CLK-V3080BSPT	WS15 DLFC Asy
IN-VS-CLK-V3010	WS1 Injektör (1A / 1K)
IN-VS-CLK-V3010-1Z	WS1 Injektör Z Plug
IN-VS-CLK-V3010-15	WS15 Injektör (WS15 / 2L - F / H)
IN-VS-CLK-V3010-2	WS2 Injektör (30" - D / G)
IN-VS-CLK-V3193-02	Açma Anahtarı
IN-VS-CLK-V3006	WS1 Bypass Vanası
IN-VS-CLK-V3818TC-BOARD	TC Board (3 Buttons)
IN-VS-CLK--V3408EI-04	EI Board (4 Buttons)
IN-VS-CLK-V3175EI-01	WS1 EI Front Cover Easy Black (Dış Kapak)
IN-VS-CLK-V4017-01	WS1 TTEI Ara Bağlantı Takımı < 10"
IN-VS-CLK-V4052-01	WS1 TTEI Ara Bağlantı Takımı 12" - 21"
IN-VS-CLK-V3004	WS1 Drive Cap Asy
IN-VS-CLK-V3728	WS2 Drive Cap Asy

Clack Spare Parts

Product Code	Model
IN-VS-CLK-V3107-01	WS1 Motor Asy
IN-VS-CLK-V3009	WS1 Auxiliary Microswitch (WS1 - WS125 - WS15)
IN-VS-CLK-V3017	WS2 Service Or Fill Switch Asy (WS2)
IN-VS-CLK-V3008-04	WS1 Drain Fitting
IN-VS-CLK-V3008-05	WS2 Drain Fitting Male NPT
IN-VS-CLK-V3330-01	WS1 Brine Elbow (Tuz Dirseği)
IN-VS-CLK-V4144-01	WS1 Brine Elbow (Quick)
IN-VS-CLK-H4612	WS15 Brine Elbow
IN-VS-CLK-H4615	Elbow Locking Clips
IN-VS-CLK-V3001	WS1 Body
IN-VS-CLK-V3151	WS1 Nut 1"
IN-VS-CLK-V3158-01	WS1 ¾" Drain Elbow (Atık Dirseği)
IN-VS-CLK-V3195-01	WS1 Refill Port Plug Asy (Kör Tapa)
IN-VS-CLK-V3192	WS1 Drain Nut 3/8"
IN-VS-CLK-V3031	T1 Body Shaft Water Regeneration (WS1 Dublex Gövde)
IN-VS-CLK-V3109	WS1 Drive Gear Cover
IN-VS-CLK-V3110	WS1 Drive Reducing Gear
IN-VS-CLK-V3178	WS1 Drive Back Plate
IN-VS-CLK-D1400	WS1 Tandem 1191 in / Out Head (2. kafa)
IN-VS-CLK-V4016 T1	WS1 Tandem Transfer Seal
IN-VS-CLK-V3002	WS1 Drive Bracket
IN-VS-CLK-V4430-02	WS15 P Fitting Assembly QC to BSPT
IN-VS-CLK-V3045	WP15 (28") Meter Cable Assembly NPT





BNT651



BNT650T



BNT650 METER



BNT1650 F

BNT Valves

*BLFC, DLFC, yoke, diffuser set, and air check are included in the prices of the BNT model valves.

Product Code	Model
IN-VV-F-BNT-56-FILTER	BNT 651 Filter Valve
IN-VV-S-BNT-56-TIMER	BNT 650 T Softener Valve - Timer
IN-VV-S-BNT-56-METER	BNT 650 Softener Valve - Meter (Flow control)
IN-VV-S-BNT-56-DIGI-METER	BNT 1650F Digital Softener Valve - Meter


F71Q1

F67Q1

F71B1

N67B1

N75A1

N111B1

Runxin Filter Valves

*Bottom diffuser, top diffuser, and diffuser tube are included in the prices of ¾", 1", and 1½" valves.

*For 2" valve prices, the top diffuser and diffuser tube are included. The bottom diffuser is not included in the price.

*Air Check is included in the price for all valves.

Product Code	Model
IN-VV-F-RNX-F71Q1	F71Q1 Filter Valve
IN-VV-F-RNX-F71P1	F71P1 Filter Valve
IN-VV-F-RNX-F67Q1	F67Q1 Filter Valve
IN-VV-F-RNX-F71B1	F71B1 Filter Valve
IN-VV-F-RNX-F67P1	F67P1 Filter Valve
IN-VV-F-RNX-F67B1	F67B1 Filter Valve
IN-VV-F-RNX-F134A1	F134A1 Filter Valve
IN-VV-F-RNX-N75A1	N75A1 Filter Valve
IN-VV-F-RNX-F99B1	F99B1 Filter Valve
IN-VV-F-RNX-N77B1	N77B1 Filter Valve
IN-VV-F-RNX-F111B1	F111B1 Filter Valve

Runxin Tandem Softener Valves

*Bottom diffuser, top diffuser, and diffuser tube are included in the prices of ¾", 1", and 1½" valves.

*For 2" valve prices, the top diffuser and diffuser tube are included. The bottom diffuser is not included in the price.

*Air Check is included in the price for all valves.

Product Code	Model
IN-VV-S-RNX-F117Q1	F117Q1 Softener Valve
IN-VV-S-RNX-F117Q3	F117Q3 Softener Valve
IN-VV-S-RNX-F65P3	F65P3 Softener Valve
IN-VV-S-RNX-F69A3	F69A3 Softener Valve
IN-VV-S-RNX-F116Q1	F116Q1 Softener Valve
IN-VV-S-RNX-F116Q3	F116Q3 Softener Valve
IN-VV-S-RNX-F63P3	F63P3 Softener Valve
IN-VV-S-RNX-63B3	63B3 Softener Valve
IN-VV-S-RNX-F92B3	F92B3 Softener Valve
IN-VV-S-RNX-F133A3	F133A3 Softener Valve
IN-VV-S-RNX-N74A3	N74A3 Softener Valve
IN-VV-S-RNX-F99A3	F99A3 Softener Valve
IN-VV-S-RNX-N77A3	N77A3 Softener Valve
IN-VV-S-RNX-F111A3	F111A3 Softener Valve

Runxin Tandem Softener Valves

*Bottom diffuser, top diffuser, and diffuser tube are included in the prices of ¾", 1", and 1½" valves.

*For 2" valve prices, the top diffuser and diffuser tube are included. The bottom diffuser is not included in the price.

*Air Check is included in the price for all valves.

Product Code	Model
IN-VV-S-RNX-F73	F73 Tandem Softener Valve
IN-VV-S-RNX-F135	F135 Tandem Softener Valve



Runxin Manual Valve

*The prices of Runxin manual valves include the bottom diffuser, top diffuser, and diffuser tube.

Product Code	Model
IN-VV-M-RNX-F56E1	F56E1 Manual Valve ¾"
IN-VV-M-RNX-F56F1	F56F1 Manual Valve 1" (32 pipe)
IN-VV-M-RNX-F56D2	N56D2 Manual Valve 2"

Runxin Diffusers

*The prices of Runxin manual valves include the bottom diffuser, top diffuser, and diffuser tube.

Product Code	Model
IN-VA-01-H2805-34	Diffuser (Top) 1" 27 mm
IN-VA-01-H2805-1	Diffuser (Top) 1" 32 mm
IN-VA-01-RUX-2-S	Diffuser (Top) 1 1/2" 50 mm. (For Runxin F74, F75)
IN-VA-01-RUX-40	Diffuser (Top) 1 1/4" 40 mm. (For Runxin F134, F133)
IN-VA-01-RUX-2-L	Diffuser (Top) 1/2" 50 mm. Long (Runxin F77, F99)
IN-VA-01-RUX-2-63	Diffuser (Top) 2" 63 mm. (Runxin F111) (H182B-2C)
IN-VA-02-H2807	Diffuser (Bottom) 1" 27 mm.
IN-VA-02-H2804	Diffuser (Bottom) 1.50 mm. Standard
IN-VA-02-H2807-1	Diffuser (Bottom) 1" 32 mm
IN-VA-02-RUX-40	Diffuser (Bottom) 1 1/4 40 mm. (For Runxin F134, F133)

Runxin Valves Spare Parts

Product Code	Model
IN-VS-RNX-546820	Injector F111 (Blue)
IN-VS-RNX-546821	Injector 1" (Yellow)
IN-VS-RNX-546819	Injector F77–F99 (Yellow)
IN-VS-RNX-5457002	1" Yoke (Open) Inlet
IN-VS-RNX-5447001	1" Yoke (Metered) Outlet
IN-VS-RNX-5447010	1 1/2" Yoke (Metered) Outlet
IN-VS-RNX-5457003	3/4" Yoke (Open) Inlet
IN-VS-RNX-5447002	3/4" Yoke (Metered) Outlet
IN-VS-RNX-5457007	1" Yoke (Flow Meter Connector) Outlet
IN-VS-RNX-G-N74A3	2" Softener Valve Body N74A3
IN-VS-RNX-G-F133A3	Valve Body F133A3 (1.5")
IN-VS-RNX-G-F134	Valve Body F134 (1.5")
IN-VS-RNX-G-F63	Lower Body 1" (F63P3-B3)
IN-VS-RNX-G-F67B	Lower Body 1" (F67B)
IN-VS-RNX-G-F67P	Lower Body 1" (F67P1)
IN-VS-RNX-G-F111	Lower Body 2" (F111)
IN-VS-RNX-G-2-F99	Lower Body 2" (F99)
IN-VS-RNX-G-F74	Lower Body 2" (N74–F74)
IN-VS-RNX-G-2-F75	Lower Body 2" (N75–F75)
IN-VS-RNX-G-F65P3	Lower Body 3/4" (F65P3)

Runxin Valves Spare Parts

Product Code	Model
IN-VS-RNX-G-F69	Lower Body 3/4" (F69)
IN-VS-RNX-G-F71	Lower Body 3/4" (F71)
IN-VS-RNX-G-F117Q3	Lower Body 3/4" (F117Q3)
IN-VS-RNX-MB-1	Main Board 1" (F63–F65–F67)
IN-VS-RNX-MB-2-F95	Main Board 2" (F95)
IN-VS-RNX-MB-2-F99	Main Board 2" (F99)
IN-VS-RNX-MB-2	Main Board 2" (N74–N75)
IN-VS-RNX-MB-1-3/4	Main Board 3/4" (F71)
IN-VS-RNX-TEV	Brine Suction Valve (F99–111)
IN-VS-RNX-6380027	Position Board (F111A3) 2"
IN-VS-RNX-6380001	Position Board (F63C3) 1"
IN-VS-RNX-6380032	Position Board (F63P3) 1"
IN-VS-RNX-6380004	Position Board (F67C1) 1"
IN-VS-RNX-6380077	Position Board (F69A3) 3/4"
IN-VS-RNX-6380009	Position Board (F71B1) 3/4"
IN-VS-RNX-6380033	Position Board (F71P1–F65P3) 3/4"
IN-VS-RNX-6380010	Position Board (F73) 2"
IN-VS-RNX-6380015	Position Board (F74A3) 2"
IN-VS-RNX-6380017	Position Board (F77A3) 2"
IN-VS-RNX-6380007	Position Board (F92) 1"

Runxin Valves Spare Parts

Product Code	Model
IN-VS-RNX-6380040	Position Board (F99A3) 2"
IN-VS-RNX-VA	2.5" Tank – Valve Adapter
IN-VS-RNX-A-12V	Adapter (12V–1.5A)
IN-VS-RNX-A-24V	Adapter (24V–1.5A)
IN-VS-RNX-VM-1	1" High Flow Softener Valve Motor (F92B)
IN-VS-RNX-2974001	Bypass Valve 1" F70A
IN-VS-RNX-2974056	Bypass Valve 3/4" F70B
IN-VS-RNX-5447003	2" with Flowmeter (N74–N75–F99) Outlet
IN-VS-RNX-IMP-N74	Impeller 2" (N74)
IN-VS-RNX-8458015	Drain Hose Connector Tandem Nipple
IN-VS-RNX-G-F135	F135 Front Cover & Side Cover
IN-VS-RNX-5243001	F67B–F63B Gear (5243001)
IN-VS-RNX-8241004	F67B–F63B3 Small Motor Gear
IN-VS-RNX-8458017	Drain Hose Connector for F73 Valve
IN-VS-RNX-8241040	F99 Large Gear (8241040)
IN-VS-RNX-5511002	Board Cable 2" (F75A1)
IN-VS-RNX-KEY-1	Small Wrench (3/4"–1")
IN-VS-RNX-KEY-2	Large Wrench (1/2"–2")
IN-VS-RNX-SBB	Meter Connection Pipe (F133A3)
IN-VS-RNX-6380040	Position Board (F99A3) 2"



FRP Tanks

*A vacuum breaker is included in the price for tank purchases of 21x62 and above

*According to the warranty conditions, all tanks must be used with the vacuum breaker recommended by the manufacturer. Using a vacuum breaker other than the recommended one will void the tank warranty.

Product Code	Model
IN-TK-0735	7"X35" Threaded - Top Opening 2,5"
IN-TK-0817	8"x17" Threaded - Top Opening 2,5"
IN-TK-0835	8"x35" Threaded - Top Opening 2,5"
IN-TK-0935	9"x35" Threaded - Top Opening 2,5"
IN-TK-1035	10"x35" Threaded - Top Opening 2,5"
IN-TK-1054	10"x54" Threaded - Top Opening 2,5"
IN-TK-1248	12"x48" Threaded - Top Opening 2,5"
IN-TK-1252	12"x52" Threaded - Top Opening 2,5"
IN-TK-1354	13"x54" Threaded - Top Opening 2,5"
IN-TK-1465	14"x65" Threaded - Top Opening 2,5"
IN-TK-1465-4	14"x65" Threaded - Top Opening 4"
IN-TK-1665	16"x65" Threaded - Top Opening 2,5"
IN-TK-1665-4	16"x65" Threaded - Top Opening 4"
IN-TK-1865	18"x65" Threaded - Top Opening 4"
IN-TK-2162	21"x65" Threaded - Top Opening 4"
IN-TK-2472	24"x72" Threaded - Top Opening 4"



FRP Tanks

*A vacuum breaker is included in the price for tank purchases of 21x62 and above

*According to the warranty conditions, all tanks must be used with the vacuum breaker recommended by the manufacturer. Using a vacuum breaker other than the recommended one will void the tank warranty.

Product Code	Model
IN-TK-3065	30"x65" Threaded - Top and Bottom Opening 4"
IN-TK-3072-4	30"x72" Threaded - Top and Bottom Opening 4"
IN-TK-3672	36"x72" Threaded - Top and Bottom Opening 4"
IN-TK-4263	42"x63" Flange - Top and Bottom Opening 6"
IN-TK-4272	42"x72" Flange - Top and Bottom Opening 6"
IN-TK-4872	48"x72" Flange - Top and Bottom Opening 6"
IN-TK-6367	63"x67" Flange - Top and Bottom Opening 6"
IN-TK-6386	63"x86" Flange - Top and Bottom Opening 6"



4"-2 1/2" PVC Reducer



4" PVC Plug



6" Flange Plug



6" Flange - 4" Reducer

6" Flange - 3" Threaded Adapter
6" Flange - 4" Threaded AdapterVacuum Breaker
(for all FRP
Tanks)

2.5" Tank - Valve Adapter

Tank Accessories

Product Code	Model
IN-TA-H9903	4" to 2 1/2" PVC Tank Reducer Bushing
IN-TA-H9914	4" PVC Closure Plug
IN-TA-H9913	6" Flange Closure Plug
IN-TA-H9905	6" Flange to 4" Reducer
IN-TA-H9912	6" Flange to 3" Thread
IN-TA-H9911	6" Flange to 4" Thread
IN-TA-VB-1	Vacuum Breaker (Small)
IN-TA-VB-2	Vacuum Breaker (Large)
IN-VS-RNX-VA	2 1/2" Tank - Valve Adapter

Top-Mount Lateral Hub Diffusers (for valve systems)

Product Code	Model
IN-TA-05-HU6600A	2" 6-Lateral Hub Diffuser for 30" Tank (fits; 50 mm Pvc diffuser pipe)
IN-TA-05-HU6600B	2" 6-Lateral Hub Diffuser for 30" Tank (fits; 50 mm Pvc diffuser pipe) (Thick Lateral)
IN-TA-05-HU6700A	2" 6-Lateral Hub Diffuser for 36" Tank (fits; 50 mm Pvc diffuser pipe)
IN-TA-05-HU6700B	2" 6-Lateral Hub Diffuser for 36" Tank (fits; 50 mm Pvc diffuser pipe) (Thick Lateral)
IN-TA-05-HU6600B2	2" 6-Lateral Hub Diffuser for 36" Tank (fits; 63 mm Pvc diffuser pipe)
IN-TA-05-HU6700B 63	2" 6-Lateral Hub Diffuser for 36" Tank (fits; 63 mm Pvc diffuser pipe) (Thick Lateral)
IN-TA-05-HU5673	3" 8-Lateral Hub Diffuser for 42" Tank (fits; 90 mm Pvc diffuser pipe)
IN-TA-05-HU5673-2	3" 16-Lateral Hub Diffuser for 42" Tank (fits; 90 mm Pvc diffuser pipe) (High Flow)
IN-TA-05-HU5674	3" 8-Lateral Hub Diffuser for 48" Tank (fits; 90 mm Pvc diffuser pipe)
IN-TA-05-HU5674-2	3" 16-Lateral Hub Diffuser for 48" Tank (fits; 90 mm Pvc diffuser pipe) (High Flow)
IN-TA-05-HU5675	3" 8-Lateral Hub Diffuser for 63" Tank (fits; 90 mm Pvc diffuser pipe)
IN-TA-05-HU5675-2	3" 16-Lateral Hub Diffuser for 63" Tank (fits; 90 mm Pvc diffuser pipe) (High Flow)
IN-TA-05-HU5676	3" 8-Lateral Hub Diffuser for 63"-80" Tank (fits; 90 mm Pvc diffuser pipe)
IN-TA-05-HU5676-2	3" 16-Lateral Hub Diffuser for 63"-80" Tank (fits; 90 mm Pvc diffuser pipe) (High Flow)

Side-Mount Lateral Hub Diffusers

Product Code	Model
IN-TA-01-H5671BU	2" Elbow Diffuser / Elbow Nozzle
IN-TA-01-H173N-0,2	3" Top Diffuser (30"-48" Flanged) 0.2 mm Slot
IN-TA-01-H173N-0,5	3" Top Diffuser (30"-48" Flanged) 0.5 mm Slot
IN-TA-01-H173NL	3" Top Diffuser (48"-63" 6" Flanged) Long Type
IN-TA-05-YED-H2814	3" Nipple (for H2814)
IN-TA-05-HD6600	2" 6-Lateral Hub Diffuser for 30" Vessel
IN-TA-05-HD6700	2" 6-Lateral Hub Diffuser for 36" Vessel
IN-TA-05-HD6850-1	2" 6-Lateral Hub Diffuser for 42" Vessel
IN-TA-05-HD5672	3" 8-Lateral Hub Diffuser for 36" Vessel
IN-TA-05-HD5673-1	3" 8-Lateral Hub Diffuser for 42" Vessel
IN-TA-05-HD5673-2	3" 16-Lateral Hub Diffuser for 42" Vessel (High Flow)
IN-TA-05-HD5674	3" 8-Lateral Hub Diffuser for 48" Vessel
IN-TA-05-HD5674-2	3" 16-Lateral Hub Diffuser for 48" Vessel (High Flow)
IN-TA-05-HD5675	3" 8-Lateral Hub Diffuser for 48"-55" Vessel
IN-TA-05-HD5676-2	4" 16-Lateral Hub Diffuser for 63" Vessel (High Flow)
IN-TA-05-HD5676-2-80T	4" 16-Lateral(Long) Hub Diffuser for 63" Vessel (High Flow)

Diffusers

Product Code	Model
IN-TA-03-H1202-0,2	3/4" Mushroom Diffuser – 0.35 mm Slot
IN-TA-03-H1202-0,35	3/4" Mushroom Diffuser – 0.2 mm Slot
IN-TA-01-H2805-34	1" Top Diffuser (27 mm) H2805
IN-TA-02-H2807	1" Bottom Diffuser (27 mm) H2807
IN-TA-01-H182A	1 ½" Top Diffuser CN (for WS15, WS2, F40 and F50)
IN-TA-01-H182AL	2" Top Diffuser (63 series) H182AL (Long) (for F60 and WS2QC)
IN-TA-02-H2804	1 ½" Bottom Diffuser CN (50 mm)
IN-TA-01-KIT8(50)	1 ½" Top Diffuser (50 mm)
IN-TA-01-KIT8(63)	2" Top Diffuser (63 series)
IN-TA-02-18396	1 ½" Bottom Diffuser
IN-TA-02-H2807-1	1" Bottom Diffuser (32 series) H2807-1
IN-TA-01-16258	3" Single Diffuser for 3900

Air Check & Float

Product Code	Model
IN-TA-06-H9907	Air Check 3/8" with Float – Runxin
IN-TA-06-H9906	Air Check 3/4" with Float – Runxin
IN-TA-06-H9901-1	Air Check 3/8" (Assembly) (H9909-1)
IN-TA-06-H9908	Air Check 3/4" (Assembly) (H9908)
IN-TA-06-H9901-1-D	Air Check 3/4" Elbow
IN-TA-06-H7070-36	Air Check 3/4" with Float – Clack
IN-TA-06-H7009-24	Air Check 3/8" with Float – Clack
IN-TA-06-H7070-36HF	Air Check 3/4" with Float – Clack HF
IN-TA-06-H4500-48	Air Check 1/2" – Clack
IN-TA-06-C1	Air Check 1" with Float – Clack
IN-TA-06-KIT57	Fleck Replacement 1700 Brine Elbow Kit
IN-TA-06-JC50-8PSG	Air Check Elbow – Clack 1/2" x 1/2"
IN-TA-06-H9908-K	Air Check 3/4" Head
IN-TA-06-H7009-24CF	Air Check 3/8" with Float – Clack CF
IN-TA-06-H7009-24HF	Air Check 3/8" with Float – Clack HF
IN-TA-06-H9908-D	Air Check 3/8" Elbow (Brine Elbow)
IN-TA-TH-10	Brine Hose 10 mm
IN-TA-TH-12	Brine Hose 12 mm








Filtration Media

Product Code	Model
IN-MIN-GACC-HDS	Granular Activated Carbon (Coconut Base) - Iodine 900 - 25kg bags
IN-MIN-GACC-JAC	JACOBI Granular Activated Carbon
IN-MIN-GACW	Wood Based Granular Activated Carbon
IN-MIN-RSN-JAC-KW8	Jacobi Resinex KW-8 Cationic Resin
IN-MIN-CLK-FLTAG	CLACK Filter Ag Plus Filtration Media
IN-MIN-DLMJ	Dolomite Juraperle AQUATECHNIEK

Pentair Aquaflex UF Modules

Product Code	Model
IN-UF-XFLOW-2272FL295A	8"(Pentair) UF Module Aquaflex XF64
IN-UF-XFLOW-2272FL295A1	8"(Pentair) UF Module Aquaflex XF64 (Connection Set Included)
IN-UF-XFLOW-2272FL295A2	8"(Pentair) UF Module Aquaflex XF64 (Connection Set + Coupling Set Included)
IN-UF-XFLOW-VDUFEC	Aquaflex Connection Set
IN-UF-XFLOW-78300	2 ½" PVC Coupling
IN-UF-XFLOW-78302	8" PVC Coupling

Lighttech UV Lamp

Product Code	Model
IN-UV-L-LT-L212	Lighttech GPH 212 UV Lamp 10W
IN-UV-L-LT-L436	Lighttech GPH 436 UV Lamp 21W
IN-UV-L-LT-L843	Lighttech GPH 843 UV Lamp 41W
IN-UV-L-LT-L843-HO	Lighttech GPH 843 HO UV Lamp 65W
IN-UV-L-LT-L1554-250	Lighttech GPH 1554 Amalgam UV Lamp 320W

Lighttech Quartz Glass for UV

Product Code	Model
IN-UV-Q-2023-0245	20 23 245 Quartz Glass Domed
IN-UV-Q-2023-0495-1	20 23 495 Quartz Glass Domed / Open
IN-UV-Q-2023-0900-1	20 23 900 Quartz Glass Domed / Open
IN-UV-Q-2023-1159-1	20 23 1159 Quartz Glass Open
IN-UV-Q-2023-1564-1	20 23 1564 Quartz Glass Open
IN-UV-Q-2832-0450-2	28 32 450 Quartz Glass Domed
IN-UV-Q-2832-0910-2	28 32 910 Quartz Glass Domed
IN-UV-Q-2831-1620	Amalgam 27x31,2x1620 Quartz Glass





Vontron (LP) Low Pressure Membranes

Product Code	Model
IN-RO-MEM-VON-4040-LP21	LP21-4040
IN-RO-MEM-VON-8040-LP22	LP22-8040
IN-RO-MEM-VON-8040-LP22-440	LP22-8040-440

Vontron (ULP) Ultra Low Pressure Membranes

Product Code	Model
IN-RO-MEM-VON-2521-ULP21	ULP21-2521
IN-RO-MEM-VON-2540-ULP21	ULP21-2540
IN-RO-MEM-VON-4021-ULP21	ULP21-4021
IN-RO-MEM-VON-4040-ULP21	ULP21-4040
IN-RO-MEM-VON-8040-ULP22	ULP22-8040
IN-RO-MEM-VON-8040-ULP32-440	ULP32-8040-440

Vontron

Product Code	Model
IN-RO-MEM-VON-4040-HT5	HT5-4040-LP
IN-RO-MEM-VON-8040-PUROII	PURO-II

Vontron (SW) Seawater Membranes

Product Code	Model
IN-RO-MEM-VON-2521-SW11	SW11-2521
IN-RO-MEM-VON-2540-SW11	SW11-2540
IN-RO-MEM-VON-4021-SW11	SW11-4021
IN-RO-MEM-VON-4040-SWLE	SW4040LE
IN-RO-MEM-VON-8040-SWLE-400	SWLE-8040-400
IN-RO-MEM-VON-8040-SWLE-440	SWLE-8040-440

Vontron FR Membranes

Product Code	Model
IN-RO-MEM-VON-4040-FR11	FR11-4040
IN-RO-MEM-VON-8040-FR12	FR12-8040

Vontron XLP Membranes

Product Code	Model
IN-RO-MEM-VON-4021-XLP11	XLP11-4021
IN-RO-MEM-VON-4040-XLP11	XLP11-4040
IN-RO-MEM-VON-8040-XLP12	XLP12-8040
IN-RO-MEM-VON-8040-XLP12-440	XLP12-8040-440



Toray Membranes

Product Code	Model
IN-RO-MEM-TOR-TM710D	TM710D
IN-RO-MEM-TOR-TM720D-400	TM720D-400
IN-RO-MEM-TOR-TM720D-440	TM720D-440
IN-RO-MEM-TOR-TBW-440HR	TBW-440HR
IN-RO-MEM-TOR-TMG10D	TMG10D
IN-RO-MEM-TOR-TMG20D-400	TMG20D-400
IN-RO-MEM-TOR-TMG20D-440	TMG20D-440
IN-RO-MEM-TOR-TM810V	TM810V
IN-RO-MEM-TOR-TM820V-400	TM820V-400
IN-RO-MEM-TOR-TM820V-440	TM820V-440
IN-RO-MEM-TOR-TM820M-400	TM820M-400
IN-RO-MEM-TOR-TM820M-440	TM820M-440
IN-RO-MEM-TOR-TMH10A	TMH10A
IN-RO-MEM-TOR-TMH20A-400C	TMH20A-400C
IN-RO-MEM-TOR-TMH20A-440C	TMH20A-440C



CSM Membranes

Product Code	Model
IN-RO-MEM-CSM-TML10D	TML10D
IN-RO-MEM-CSM-TML20D-400	TML20D-400
IN-RO-MEM-CSM-TLF400DG	TLF-400DG
IN-RO-MEM-CSM-2540-BE	RE2540-BE
IN-RO-MEM-CSM-4021-BE	RE4021-TE
IN-RO-MEM-CSM-4040-BE	RE4040-BE
IN-RO-MEM-CSM-8040-BE34	RE8040-BE
IN-RO-MEM-CSM-8040-BE440	RE8040-BE440
IN-RO-MEM-CSM-2540-BLN	RE2540-BLN
IN-RO-MEM-CSM-4021-TL	RE4021-TL
IN-RO-MEM-CSM-4040-BLN	RE4040-BLN
IN-RO-MEM-CSM-4040-BLR	RE4040-BLR
IN-RO-MEM-CSM-8040-BLN	RE8040-BLN
IN-RO-MEM-CSM-8040-BLN440	RE8040-BLN440



CSM Membranes

Product Code	Model
IN-RO-MEM-CSM-4040-BLF	RE4040-BLF
IN-RO-MEM-CSM-8040-BLF	RE8040-BLF
IN-RO-MEM-CSM-4040-FL	RE4040-FLR
IN-RO-MEM-CSM-8040-FEN	RE8040-FEN34
IN-RO-MEM-CSM-8040-FL	RE8040-FL
IN-RO-MEM-CSM-4040-CE	RE4040-CE
IN-RO-MEM-CSM-4040-90	NE4040-90
IN-RO-MEM-CSM-4040-70	NE4040-70
IN-RO-MEM-CSM-8040-90	NE8040-90
IN-RO-MEM-CSM-8040-70	NE8040-70

Membrane Housings

Product Code	Model
IN-RO-MEMH-4021	40x21 Membrane Housing – 1 Element
IN-RO-MEMH-4040	40x40 Membrane Housing – 1 Element
IN-RO-MEMH-4080	40x80 Membrane Housing – 2 Elements
IN-RO-MEMH-40120	40x120 Membrane Housing – 3 Elements
IN-RO-MEMH-40160	40x160 Membrane Housing – 4 Elements
IN-RO-MEMH-8040	80x40 Membrane Housing – 1 Element
IN-RO-MEMH-8080	80x80 Membrane Housing – 2 Elements
IN-RO-MEMH-80120	80x120 Membrane Housing – 3 Elements
IN-RO-MEMH-80160	80x160 Membrane Housing – 4 Elements
IN-RO-MEMH-80200	80x200 Membrane Housing – 5 Elements
IN-RO-MEMH-80240	80x240 Membrane Housing – 6 Elements
IN-RO-MEMH-SPR-1	8" Pulley Included Membrane Housing Head
IN-RO-MEMH-SPR-2	8" Membrane Housing Head
IN-RO-MEMH-SPR-3	8" Membrane Housing Reducer
IN-RO-MEMH-SPR-4	8" Membrane Housing Cushion
IN-RO-MEMH-SPR-5	8" Membrane Housing Clamp
IN-RO-MEMH-SPR-6	4" Membrane Housing Cushion
IN-RO-MEMH-SPR-7	4" Membrane Housing Clamp



Pentair Codeline Membrane Housings

* 4" - 8" Membrane Housings: the spacer, plug, and clamp are included; the coupling is not included.

Product Code	Model
Pentair Codeline	
IN-RO-MEMH-COD-4040	40x40 FRP Membrane Housing, 1 Element
IN-RO-MEMH-COD-4080	40x80 FRP Membrane Housing, 2 Elements
IN-RO-MEMH-COD-40120	40x120 FRP Membrane Housing, 3 Elements
IN-RO-MEMH-COD-8040	80x40 FRP Membrane Housing, 1 Element
IN-RO-MEMH-COD-8080	80x80 FRP Membrane Housing, 2 Elements
IN-RO-MEMH-COD-80120	80x120 FRP Membrane Housing, 3 Elements
IN-RO-MEMH-COD-80160	80x160 FRP Membrane Housing, 4 Elements
IN-RO-MEMH-COD-80200	80x200 FRP Membrane Housing, 5 Elements
IN-RO-MEMH-COD-80240	80x240 FRP Membrane Housing, 6 Elements

Membrane Housing Spares

Product Code	Model
IN-RO-MEMH-SPR-COD-94160	Head Assy 80S100
IN-RO-MEMH-SPR-COD-94159	Head Assy 80S120
IN-RO-MEMH-SPR-COD-94173	Head Assy 80H100
IN-RO-MEMH-SPR-COD-94174	Head Assy 80H120
IN-RO-MEMH-SPR-COD-96158	8" Bearing Plate
IN-RO-MEMH-SPR-COD-96163	Thrust Cone - 80D & 80S Coded
IN-RO-MEMH-SPR-COD-97014	Thrust Cone - 80D & 80S Non-Coded
IN-RO-MEMH-SPR-COD-47336	Retaining Ring
IN-RO-MEMH-SPR-COD-45069	Thrust Ring
IN-RO-MEMH-SPR-COD-96160	Sealing Plate-80S Coded
IN-RO-MEMH-SPR-COD-96162	Permeate Port -80S Coded
IN-RO-MEMH-SPR-COD-96000	Head Seal 8"
IN-RO-MEMH-SPR-COD-52245	Adapter Seal New
IN-RO-MEMH-SPR-COD-45312	Permeate Port Seal
IN-RO-MEMH-SPR-COD-50161	Adapter Kit (Std.) up to 600 PSI
IN-RO-MEMH-SPR-COD-50165	Adapter Kit (Std.) 1000/1200 PSI
IN-RO-MEMH-SPR-COD-50626	Adapter Kit (Std.) up to 600 PSI 4"
IN-RO-MEMH-SPR-COD-50540	Adapter Kit (Std.) 1000/1200 PSI 4"
IN-RO-MEMH-SPR-COD-96421	Adapter Shimm 1mm
IN-RO-MEMH-SPR-COD-96421	Adapter Shimm 2mm
IN-RO-MEMH-SPR-COD-96272	Adapter Shimm 3mm
IN-RO-MEMH-SPR-COD-96422	Adapter Shimm 4mm
IN-RO-MEMH-SPR-COD-96245	Adapter Shimm 5mm



Nuert Pumps

Product Code	Model
IN-RP-NU-0200	RO Pump 200 lt/h 3/8" NUERT
IN-RP-NU-0400	RO Pump 400 lt/h 3/8" NUERT
IN-RP-NU-0600	RO Pump 600 lt/h 1/2" NUERT
IN-RP-NU-1000	RO Pump 1000 lt/h 1/2" NUERT



RPM Motors

Product Code	Model
IN-RPM-033	0,33 HP Direct Coupling
IN-RPM-050	0,50 HP Direct Coupling
IN-RPM-075	0,75 HP Direct Coupling
IN-RPM-100	1 HP RO Motor



RPM Motor Spares

Product Code	Model
IN-RPM-SPR-PR-48YZ	RO Coupling Plastic Set for 200-1000
IN-RPM-SPR-PR-48YZ-1	RO Metal Clamp for Ro Pump 2043

BFUEngineering

www.bfuengineering.com

info@bfuengineering.com
